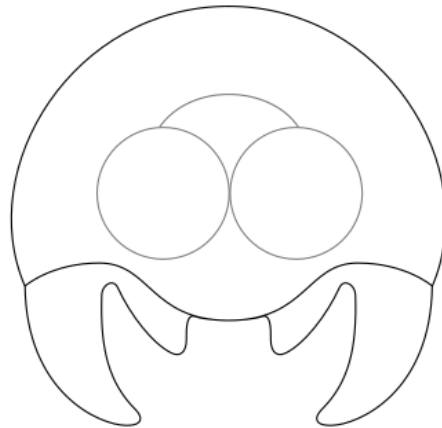


MAKE YOUR OWN VIDEO GAME COOKIE CUTTER

Super MAGFest 2019



Justin Aquadro
jaquadro@gmail.com
texelsaurus.com

What's the Point?

- Make awesome cookies!
- Decorating is another topic



Cookie Cutters



Materials



Aluminum Sheet Metal

- Aluminum flashing found at home centers
- Can be found in 20 in. x 10 ft. rolls
- Cut into 1 inch strips



Joining Adhesive

- Food-safe silicone sealant
- Hot glue is a food-safe alternative
- There's non-adhesive options too

Tools



Main Forming Tools

- Rollers <1" diameter
- Corner bending

Other Tools

- Scissors
- Permanent Marker
- Sandpaper
- Acetone
- Wire cutters, metal punch, rivet gun...

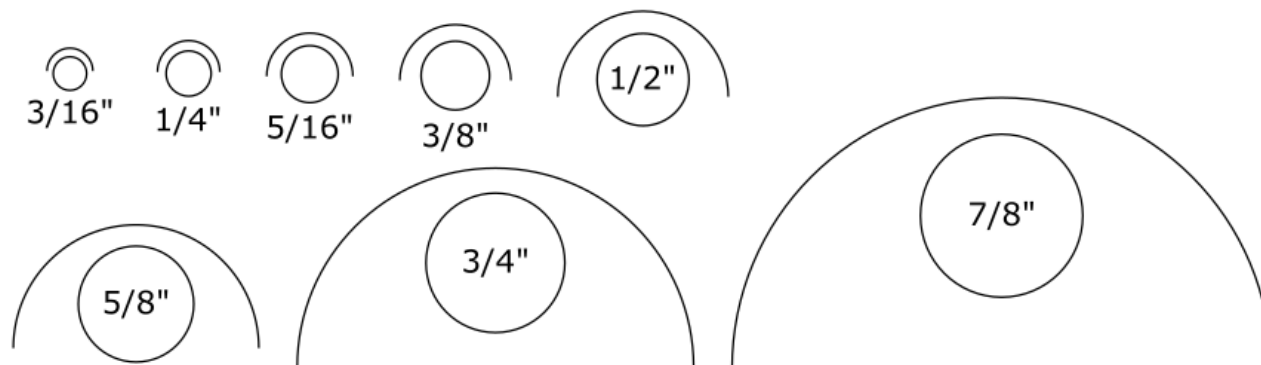
Forming

Corners

- Bend strip against a hard corner or square dowel
- Finish tighter corners by hand

Uniform Curves

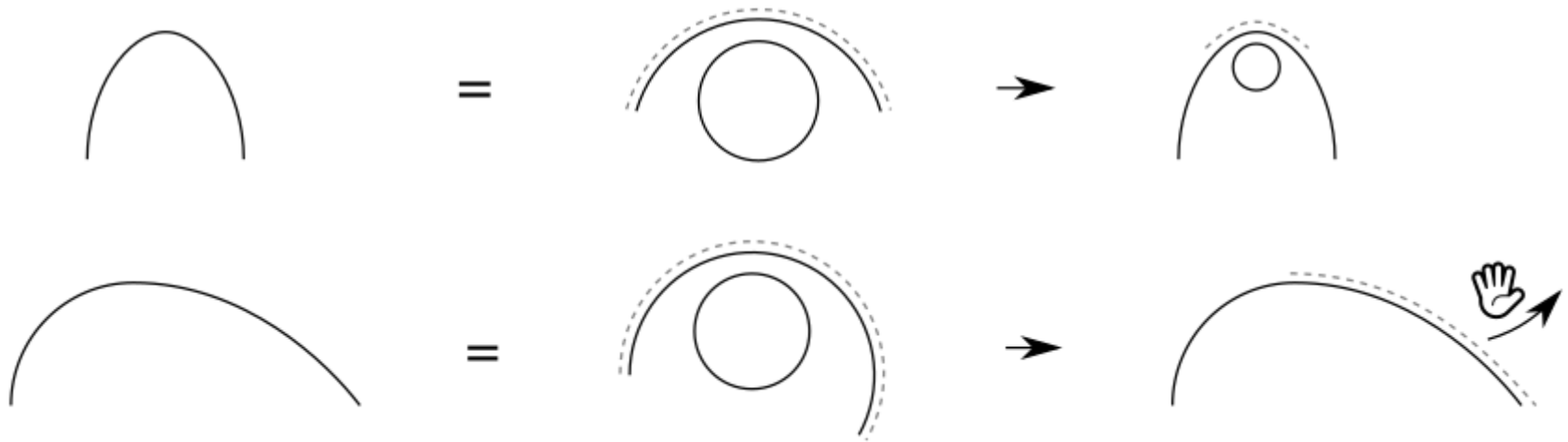
- Continually roll strip around dowel or round object
- Resulting curve will be larger than the dowel size



Forming

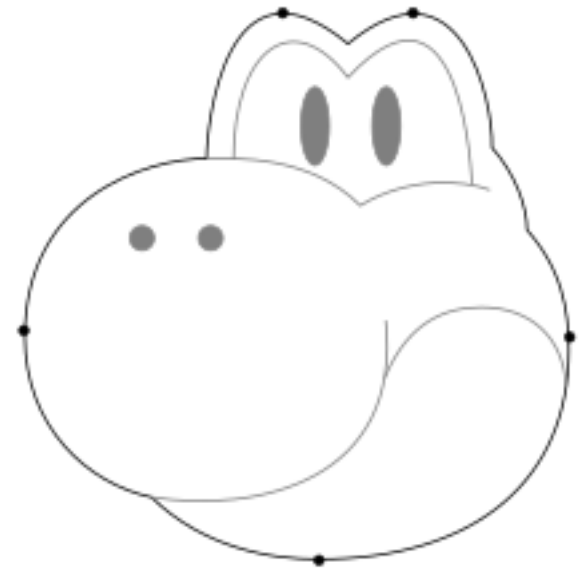
Non-Uniform Curves

- Start with a larger or smaller radius curve
- Tighten sections with a smaller dowel
- Loosen sections by pulling apart by hand

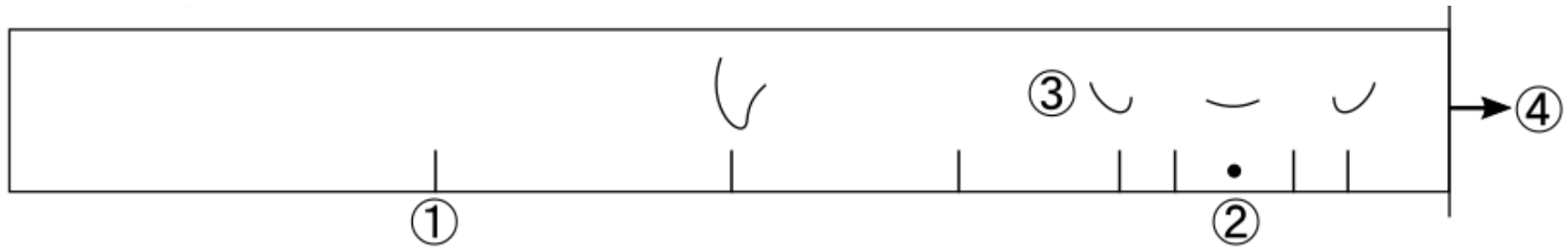


Patterns

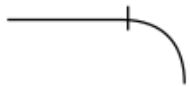
- Turning a 2D shape into a 1D guide
- Shape and strip patterns are 1:1 scale
- Scale shape lets you check your work
- Copy main pattern marks to your strip



Reading a Pattern



1. Major points of interest



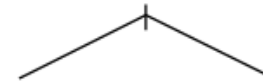
Begin / end
of curves



Points of
inflection



Tight curves



Sharp corners

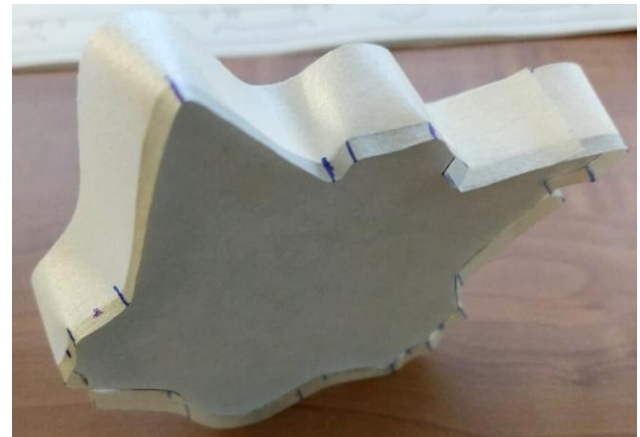
2. Minor points of interest

3. Feature hints

4. Pattern continued to next line

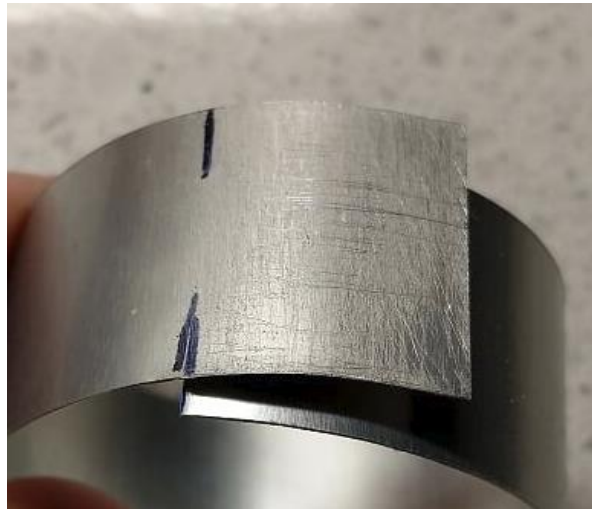
Making a new Pattern

- Draw your shape on card stock or thin cardboard, then cut it out
- Carefully wrap the edge of cutout with masking tape
- Mark any points of interest
- Pull tape back off
- The tape represents a completed pattern



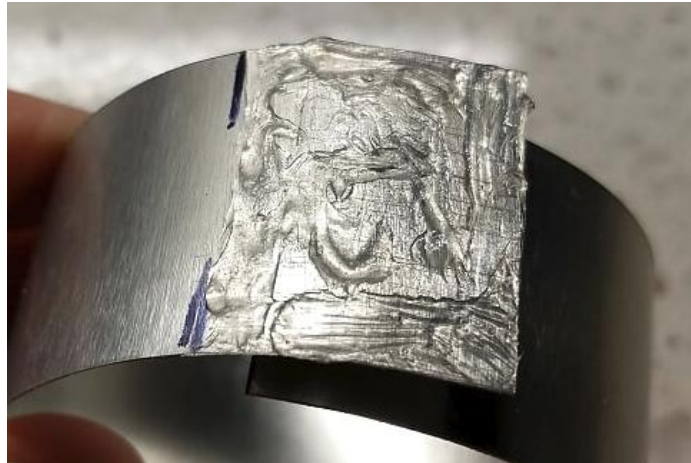
Joining

- Cutter ends should overlap by about 1”
- Prep joining surfaces by sanding overlapping areas
- Wipe area clean with water or acetone
- This is a good time to remove sharpie marks



Joining with Silicone

- Spread a thin layer of silicone over one surface
- Try to cover all the edges
- Put edges together
- Squeeze out excess silicone and wipe it away
- Wrap tape around the join for 24 hours



Joining with Hot Glue

- Quickly put down a bead of glue all around the join area
- IMMEDIATELY squeeze the two surfaces together
- Surfaces may get HOT, don't burn your fingers
- Hot glue sets in a few seconds on aluminum

Care

- Hand wash only
- Pay attention to join area when cleaning

If your new cutter ever comes apart, remove any old adhesive, re-prepare the surfaces, then re-apply silicone or hot glue depending on what is available to you. Cutters are also functional with just a loop of tape.

Questions

- Hey, don't wait for everyone else's questions. Get started now!

Find these slides and other resources at:
<https://texelsaurus.com/cookies>